

Line-up

Glass Plate

Tokai Hit's Glass Heater Standards

Temp. setting range : Ambient - 60℃ (* Depending on the model)

Original clear glass heater maintains stable temperature. Support the needs in different various fields such as Time-Lapse in low magnification and/or IVF field.



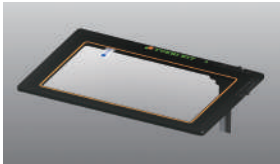
<Components>

Glass Plate	○
Controller	○
External Sensor	○
Extension Wire	○
Logging Software TEM	○



INVERTED

Microscope : **Ti2 / TS2R**
Applicable stage : XY manual stage (TC-S-SR/SRF)



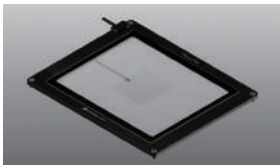
Model **TPI-TCSX**
Glass thickness : 0.5 (mm)
Plate dimensions : W127.5×D85.5 (mm)
Heating area : W115×D75 (mm)

Microscope : **Ti2 / Ti / TE2000**
Applicable stage : Rectangular stage with 108mm round opening



Model **TPI-108RX**
Glass thickness : 0.5 (mm)
Plate dimension : φ 108 (mm)
Heating area : W70×D70 (mm)

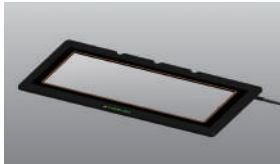
Microscope : **Ti2 / Ti**
Applicable stage : Ti2 exclusive XY motorized stage (TI2-S-SE-E, TI2-S-SS-E) / Ti exclusive XY motorized stage (TI-S-E/ER)



Model **TPI-TIZGX**
Glass thickness : 0.5 (mm)
Plate dimensions : W159.5×D109.5 (mm)
Heating area : W129×D87 (mm)

* In case the Nikon Piezo stage is not attached,
TI2-NA (for Ti2) / **TID-NA** (for Ti) is required separately.

Microscope : **TS2**
Applicable stage : XY manual stage (TS2-S-SM)



Model **TPI-TS2X**
Glass thickness : 0.5 (mm)
Plate dimensions : W238×D122 (mm)
Heating area : W216×D94 (mm)

Microscope : **TMS / TMS-F**
Applicable stage : XY mechanical stage



Model **TPI-TMSX**
Glass thickness : 0.5 (mm)
Plate dimensions : W130×D90 (mm)
Heating area : W103×D66 (mm)

Microscope : **TS / TS-100**
Applicable stage : XY mechanical stage



Model **TPI-TSX**
Glass thickness : 0.5 (mm)
Plate dimensions : W130×D97.5 (mm)
Heating area : W101×D71.5 (mm)



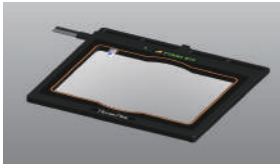
Model **TPI-CKTS**
Glass thickness : 0.5 (mm)
Plate dimensions : W150×D117 (mm)
Heating area : W131×D95 (mm)



UPRIGHT

Microscope : **Ni / Ci / 90i / 80i / 55i / 50i**
E1000/800/600/400/200
OPTIPHOT-2 / LABOPHOT-2

Applicable stage : XY mechanical stage



Model **TPI-SX**
Glass thickness : 0.5 (mm)
Plate dimensions : W142×D115 (mm)
Heating area : W128×D95 (mm)



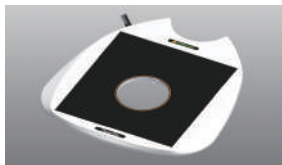
STEREO

Microscope : **SMZ25/18/1270**
Illumination base : P2-PB/DBL/DBF, P-DSL32/DSF32



Model **TPI-SMZ25X**
Glass thickness : 1.0 (mm)
Plate dimensions : W251×D238 (mm)
Heating area : W185×D175 (mm)

Microscope : **SMZ1500/1000/800**
Illumination base : C-DSD/DSS/BD



Model **TPI-SMZSLX**
Glass thickness : 1.0 (mm)
Plate dimensions : W254×D263 (mm)
Heating area : W175×D185 (mm)

Microscope : **SMZ1500/1000/800**
Illumination base : C-PS, C-05



Model **TPI-SMZSSX**
Glass thickness : 1.0 (mm)
Plate dimensions : W198×D269 (mm)
Heating area : W162×D152 (mm)



Model **TPI-SMZR**
Glass thickness : 1.0 (mm)
Plate dimensions : φ 180 (mm)
Heating area : W120×D120 (mm)

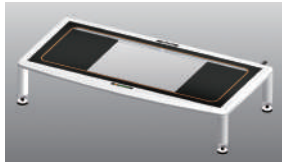
Microscope : **SMZ series**
Illumination base : SMZ series illumination base



Model **TPI-SMZU**
TPI-SMZ6
TPI-SMZ
Glass thickness : 1.0 (mm)
Plate dimensions :
SMZU : W260×D225 (mm)
SMZ6 : W200×D240 (mm)
SMZ : W132×D195 (mm)

UNIVERSAL

For various types of illumination bases

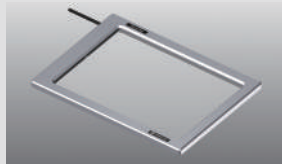


Model **TPI-UNIX**
Glass thickness : 1.5 (mm)
Plate dimensions : W435×D220 (mm)
Heating area : W400×D175 (mm)
Leg adjustment : 75~100 (mm)
*Temp. setting : Ambient~50℃

Large Glass Type



Model **TPI-W**
Glass thickness : 1.5 (mm)
Plate dimensions : W230×D180 (mm)
Heating area : W180×D140 (mm)



Model **TPI-WL**
Glass thickness : 1.5 (mm)
Plate dimensions : W310×D220 (mm)
Heating area : W250×D170 (mm)

Applied strengthen glass and with
10 year free-repair service for glass breakage



Metal Plate

For oil/water immersion objective and high-magnification objective imaging

Temp. setting range : Ambient - 60°C

Focus drift is caused by thermal expansion from the ordinaly ON/OFF regulation.
Tokai Hit is applying Continuous Current Control regulation as standard to minimize focus drift.



<Components>

Metal Plate with a hole	○
Controller	○
External Sensor	○
Extension Wire	○
Logging Software TEM	○



Microscope : **Ti2 / TS2R**

Applicable stage : XY manual stage (TC-S-SR/SRF)

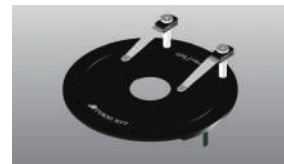


Model **TPI-TCSH26**

Plate dimensions : W127.5×D85 (mm)
With a hole (φ 26mm)

Microscope : **Ti2 / Ti / TE2000**

Applicable stage : Rectangular stage with 108mm round opening

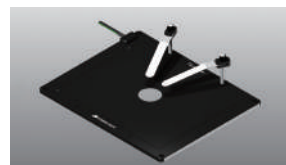


Model **TPI-108RH26**

Plate dimension : φ 108 (mm)
With a hole (φ 26mm)

Microscope : **Ti2 / Ti**

Applicable stage : Ti2 exclusive XY motorized stage (TI2-S-SE-E, TI2-S-SS-E) / Ti exclusive XY motorized stage (TI-S-E/ER)



Model **TPI-TIZH26**

Plate dimensions : W160×D110 (mm)
With a hole (φ 26mm)

* In case the Nikon Piezo stage is not attached,
TI2-NA (for Ti2) / **TI2-NA** (for Ti) is required separately.

Options

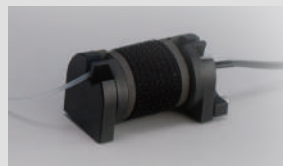


Lens Heater

Model **TPiE-LH**

Temp. setting range : Ambient - 45°C

Prevents heat loss from the sample especially when using oil/water immersion objective and high-magnification objective.



Tube Heater

Model **TPiE-TH**

Temp. setting range : Ambient - 50°C

A compact barrel-type heater. Simply wrap the media tubing for heating the media before inserting it to Chamber Unit.



Hot Plate

Model **TPiE-SP/SPE**

Temp. setting range : Ambient - 45°C

Light-weight and thin aluminum thermal plate
TPiE-SP : W482×D282 (mm)
TPiE-SPE : W282×D232 (mm)

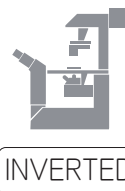


Ultra Low-noise Plate

Suitable to maintain sample temp. during potential measurement in life science field

Temp. setting range : Ambient - 60°C

Incorporate shield mechanism to reduce noise.
Minimize noise from surface of the plate because the whole surface of the glass heater is connected to the earth.



Microscope : **Ti2 / Ti / TE2000**

Applicable stage : Rectangular stage with 108mm round opening



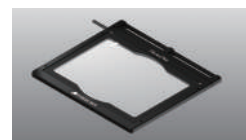
Model **TPiN-108NLR**

Glass thickness : 0.7 (mm)
Plate dimensions : φ 108 (mm)
Heating area : W70×D70 (mm)



Microscope : **Ni / Ci / 90i / 80i Upright microscope**

Applicable stage : XY mechanical stage



Model **TPiN-NLS**

Glass thickness : 0.7 (mm)
Plate dimensions : W142×D115 (mm)
Heating area : W128×D95 (mm)

<Components>

Metal Plate with a hole	○
Controller	○
External Sensor	×
Extension Wire	×
Logging Software TEM	×



Noiseless type controller



Cooling/Heating Plate

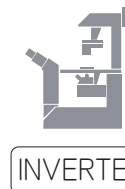
Best for observing yeast, plants, marine samples, cultured cell, C. elegans and/or Planarian, etc.

Temp. setting range : 4°C - 60°C

With electronic cooling element (Peltier module) and original control system, it allows responsive cooling and heating regulation.

<Components>

Metal Plate with a hole	○
Controller	○
External Sensor	×
Extension Wire	×
Logging Software TEM	×
Chiller Unit	○



Microscope : **Ti2 / TS2R**

Applicable stage : XY manual stage (TC-S-SR/SRF)



<With Chiller Unit>

Model **TP-CHTCS-C**

Plate dimensions : W127.5×D85 (mm)
With a hole (φ 20mm)

Microscope : **Ti2 / Ti / TE2000**

Applicable stage : Rectangular stage with 108mm round opening



<With Chiller Unit>

Model **TP-CH108RBF-C**

Plate dimension : φ 108 (mm)
With a hole (φ 20mm)
* Bottom flat type



<With Chiller Unit>

Model **TP-CH108R-C**

Plate dimension : φ 108 (mm)
With a hole (φ 20mm)
* Surface flat type



Microscope : **Ni / Ci / 90i / 80i Upright microscope**

Applicable stage : XY mechanical stage



<With Chiller Unit>

Model **TP-CHS-C**

Plate dimensions : W110×D110 (mm)
With a hole (φ 20mm)

<With exclusive Chiller Unit>

Cool circulating water with sealed water.
Effective for long-term use.

Controller

Temperature controller and pump for circulating water are built in.

Plate

Cooling element (Peltier module) and a circulation flow path for taking heat of the Peltie module are built in.